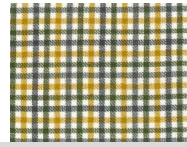
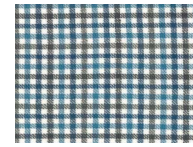




Colori:



B043
Ecru green



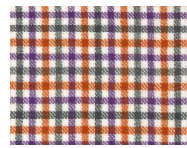
G125
Blue grey



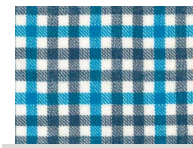
B044
Ecru brown



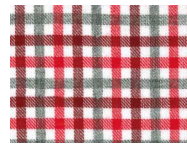
G126
Blue ecru



D018
Orange multicolor



G127
Blue ecru



F025
Pink violet

CAMICIA BUTTON-DOWN IN FLANELLA LEGGERA TINTO FILO

Modello: **222B-1221A**

Vestibilità: **Regular Fit**

Composizione: **100% Cotone**

Tecnologia:

Descrizione:

Camicia manica lunga dal taglio classico. Modello con collo Francese , polso arrotondato, davanti liscio senza taschino con ricamo logo. Realizzata in flanella leggera di cotone tinto in filo con colori abase chiara per una camicia elegante