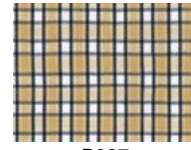




Colori:



A003
White / Yellow / Blue



B027
Beige / Blue



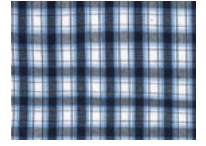
G051
Blue / Beige



A008
White / Beige / Grey / Blu



B028
Beige / Blue



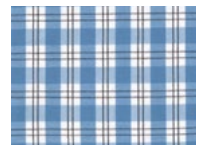
G052
Blue / White



A009
White / Beige / Blue



C033
Beige / Brown



G053
Blue / White



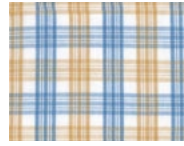
B025
White / Blue / Beige



C034
Beige / Brown



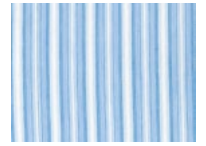
G054
Blue



B026
White / Beige / Blue



E010
White / Blue / Pink



G055
Blue / White



L014
Grey / Blue

CAMICIA BUTTON-DOWN CON MANICA LUNGA E TASCHINO

Modello: **213A-1230A**

Vestibilità: **Regular Fit**

Composizione: **100% Cotone**

Tecnologia:

Descrizione:

Camicia manica lunga dal taglio classico con taschino. Modello con colletto con bottoni, doppio bottone al polso e taschino con ricamo logo Carrera. Realizzata in diverse fantasie con cotone tinto in filo. La tua comoda camicia per ogni giorno.