



MEN'S COLLECTION

FALL / WINTER 2024



**COSMO
SELECTION**



OUR INTEGRATED SUPPLY CHAIN

LA NOSTRA FILIERA INTEGRATA

UNSERE GANZHEITLICHE LIEFERKETTE

NOTRE CHAÎNE D'APPROVISIONNEMENT INTÉGRÉE

Hand picking

Raccolta a mano



Handpflücken

Cueillette à la main

Spinning

Filatura



Spinnen

Filage

Weaving

Tessitura



Weben

Tissage

Packaging

Confezione



Verpacken

Emballage

Washing, inspection

Lavaggio, controllo



Waschen, Prüfen

Lavage, contrôle qualité

Warehousing

Magazzino



Lagern

Entreposage

EN

Why Tajikistan?

Tajikistan is a major producer of cotton, and has a millennial textile culture, being on the ancient Silk Road.

Why the integrated supply chain?

Carrera is a company that has always been sensitive to environmental issues;

Carrera's integrated supply chain in Tajikistan helps reduce the greenhouse effect because there is no movement of trucks between the various stages, the saving in terms of CO2 emissions is equivalent to the emission of more than 6.000 cars!

Why hand-picks cotton?

Hand-picking cotton is kinder to the fibre and sustainable for the environment, because no chemicals are used to speed up the ripening process; hand-picking cotton allows the best flowers to be selected only when they are ripe.

DE

Warum Tadschikistan?

Tadschikistan ist ein wichtiger Produzent von Baumwolle, und hat eine jahrtausendealte Textilkultur, da es an der alten Seidenstraße liegt.

Warum die integrierte Lieferkette?

Die ganzheitliche Lieferkette von Carrera in Tadschikistan trägt zur Verringerung des Treibhauseffektes bei, da keine Lkw-Bewegungen zwischen den einzelnen Produktionsschritten stattfinden. Die Einsparung an CO2-Emissionen entspricht dem Ausstoß von mehr als 6.000 Autos!

Warum Baumwolle von Hand pflücken?

Die Handpflückung von Baumwolle ist schonender für die Faser und nachhaltiger für die Umwelt, da keine Chemikalien eingesetzt werden, um den Reifeprozess zu beschleunigen; die Handpflückung von Baumwolle ermöglicht es, die besten Blüten erst dann auszuwählen, wenn sie reif sind.

Perché il Tagikistan?

Il Tagikistan è un grande produttore di cotone, e ha una cultura tessile millenaria trovandosi sull'antica Via della Seta.

Perché la filiera integrata?

Carrera è un'azienda da sempre sensibile alle tematiche ambientali;

la filiera integrata di Carrera, in Tagikistan, contribuisce a ridurre l'effetto serra perché non c'è movimentazione di camion tra le varie fasi, il risparmio in termini di emissioni di CO2 equivale all'emissione di oltre 6.000 macchine!

Perché la raccolta a mano del cotone?

La raccolta a mano del cotone è più delicata per la fibra e sostenibile per l'ambiente, perché non si usano prodotti chimici per accelerarne la maturazione; la raccolta a mano del cotone permette di selezionare i fiori migliori solo quando sono maturi.

IT

Pourquoi le Tadjikistan?

Le Tadjikistan est un important producteur de coton, et possède une culture textile millénaire, étant sur l'ancienne route de la soie.

Pourquoi la chaîne d'approvisionnement intégrée?

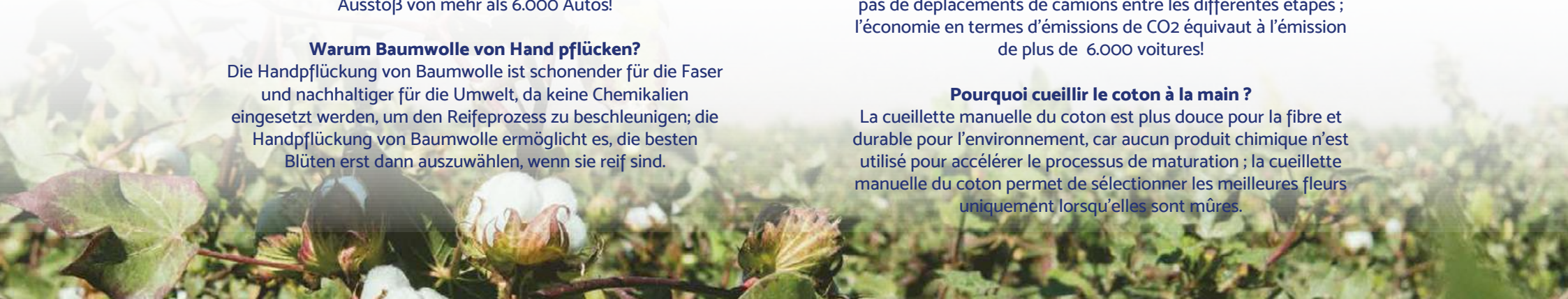
Carrera est une entreprise qui a toujours été sensible aux questions environnementales;

La chaîne d'approvisionnement intégrée de Carrera au Tadjikistan contribue à réduire l'effet de serre parce qu'il n'y a pas de déplacements de camions entre les différentes étapes ; l'économie en termes d'émissions de CO2 équivaut à l'émission de plus de 6.000 voitures!

Pourquoi cueillir le coton à la main ?

La cueillette manuelle du coton est plus douce pour la fibre et durable pour l'environnement, car aucun produit chimique n'est utilisé pour accélérer le processus de maturation ; la cueillette manuelle du coton permet de sélectionner les meilleures fleurs uniquement lorsqu'elles sont mûres.

FR



MAN FIT

T-SHIRTS, SWEATSHIRTS, JUMPERS, JACKETS, BLAZERS

| Size | S | M | L | XL | XXL | 3XL |
|------------|-------|--------|---------|---------|---------|---------|
| Chest (cm) | 88/94 | 94/100 | 100/106 | 106/112 | 112/118 | 118/124 |

SHIRTS

| Size | S | M | L | XL | XXL | 3XL |
|-------------|-------|--------|---------|---------|---------|---------|
| Collar (cm) | 38/39 | 40/41 | 42/43 | 44/45 | 46/47 | 48/49 |
| Chest (cm) | 88/94 | 94/100 | 100/106 | 106/112 | 112/118 | 118/124 |

SPORTS TROUSERS, TRACKSUITS, SHORTS, UNDERWEAR

| Size | S | M | L | XL | XXL | 3XL |
|------------|----|----|----|-----|-----|-----|
| Waist (cm) | 80 | 86 | 92 | 100 | 108 | 116 |

TROUSERS, JEANS

| | | | | | | | | | | |
|---------------------|-------|-------|--------|---------|---------|---------|---------|---------|---------|---------|
| IT | 44 | 46 | 48 | 50 | 52 | 54 | 56 | 58 | 60 | 62 |
| EUR (corresponding) | 38 | 40 | 42 | 44 | 46 | 48 | 50 | 52 | 54 | 56 |
| USA (corresponding) | 30 | 31 | 33 | 34 | 39 | 38 | 40 | 42 | 44 | 46 |
| Waist (cm) | 74 | 80 | 84 | 88 | 92 | 98 | 102 | 106 | 112 | 116 |
| Hips (cm) | 90/92 | 94/96 | 98/100 | 102/104 | 106/108 | 110/112 | 114/116 | 118/120 | 122/124 | 126/128 |

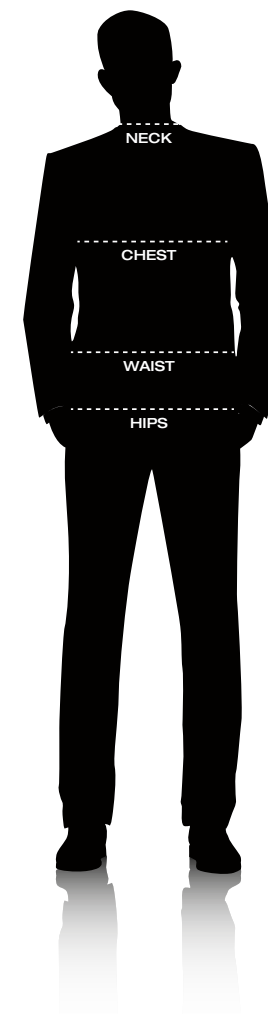
BELTS

| | | | | |
|------------|-------|--------|---------|---------|
| EU (cm) * | 85 | 95 | 105 | 115 |
| Waist (cm) | 82/90 | 92/100 | 102/110 | 112/120 |

* The length is measured from the buckle to the third hole in the belt

SHOES

| | | | | | | | |
|------------------|------|------|----|------|------|------|------|
| EU | 40 | 41 | 42 | 43 | 44 | 45 | 46 |
| UK | 6,5 | 7,5 | 8 | 9 | 9,5 | 10,5 | 11 |
| USA | 7,5 | 8,5 | 9 | 10 | 10,5 | 11,5 | 12 |
| Size Length (cm) | 26,7 | 27,3 | 28 | 28,7 | 29,3 | 30 | 30,7 |



The measurements indicated in the size guide refer to body measurements and not to garments.

| REGULAR FIT 5 POCKETS | 700 |
|-----------------------|------------------------------|
| | Waist Regular cm 43 |
| | Leg Regular |
| | Inside leg cm 87 |
| | Bottom Regular cm 18,5 |

| REGULAR FIT 5 POCKETS | 710 |
|-----------------------|------------------------------|
| | Waist Regular cm 43 |
| | Hip Straight |
| | Inside leg cm 87 |
| | Bottom Regular cm 18,5 |

| REGULAR FIT 5 POCKETS | 707 |
|-----------------------|------------------------------|
| | Waist Regular cm 43 |
| | Leg Slightly arched |
| | Inside leg cm 87 |
| | Bottom Regular cm 18,5 |

| SLIM FIT 5 POCKETS | 717 |
|--------------------|--------------------------|
| | Waist Low cm 43 |
| | Leg Slim |
| | Inside leg cm 81,5 |
| | Bottom Tight cm 17 |

| SKINNY FIT 5 POCKETS | 727 |
|----------------------|--------------------------------|
| | Waist Regular cm 43 |
| | Leg Tight |
| | Inside leg cm 76 |
| | Fondo Very tight cm 15,5 |

| CARROT FIT 5 POCKETS | 739 |
|----------------------|-------------------------------|
| | Waist Comfortable cm 44 |
| | Crotch Dropped |
| | Inside leg cm 68 |
| | Bottom Tight cm 16,5 |

| RELAXED FIT CARPENTER | 725 |
|-----------------------|-------------------------------|
| | Waist Comfortable cm 44 |
| | Leg Wide |
| | Inside leg cm 81,5 |
| | Bottom Wide cm 20 |

| REGULAR FIT CHINO | 624 |
|-------------------|------------------------------|
| | Waist Regular cm 43 |
| | Leg Regular |
| | Inside leg cm 87 |
| | Bottom Regular cm 18,5 |

FW 2024 Collection Fabrics / Tessuti Collezione AI 2024



... the technology is Italian, Carrera fabrics are born with a big heart, the "Cotton Heart".

For Carrera only the longest and softest fibers of the cotton flower become "Cotton Heart" yarn, to give the product a softness and superior comfort ... because this is our philosophy.

PLAY NEW GENERATION JEANS



ART. 0900 - PLAY Jeans 10 oz.
85% CO, 12% PL, 3% EA

*Try it and you will discover
the convenience and the originality
of a unique garment in its kind!*

ORIGINAL 1965 DENIM



ART. 1021 - Denim 13,5 oz.
100% CO

ELASTICIZED DENIM



ART. 0921
Denim 13 oz.
92% CO, 6% PL, 2% EA

ART. 0970
Denim 12,5 oz.
92% CO, 6% PL, 2% EA

Elastic

SPINTECH[®]
TEXTILE TECHNOLOGY

ONLY
COTTON
ON THE
SKIN



Stretch
Yarn Core

Cotton on
the skin

CARRERA
Innovative Jeans

PLAY NEW GENERATION JEANS

The "CARRERA PLAY" fabric is the result of a revolutionary technology, it speaks of denim on the outside and comfortable fleece on the inside. It is not a doubled fabric but rather an extraordinary fabric created by the knowledge of those who know Denim.

SPINTECH[®] Elastic

FW 2024 Collection Fabrics / Tessuti Collezione AI 2024

ORIGINAL FABRICS



ART. 1345
Heavy gabardine
10 oz. - 100% CO

ART. 1065
Moleskin
10,5 oz. - 100% CO

ART. 1050
1000 lines velvet
10,5 oz. - 100% CO

ART. 1051
500 lines velvet
12 oz. - 100% CO

ELASTICIZED FABRICS



ART. 9302
Bull Denim
12,5 oz. - 98% CO, 2% EA

ART. 0945
Gabardine
10,5 oz. - 98% CO, 2% EA

ART. 9165
Moleskin
11,5 oz. - 97% CO, 3% EA

ART. 0950
1000 lines velvet
10,5 oz. - 98% CO, 2% EA

SPINTECH
Elastic

ELASTICIZED FABRICS



ART. 8302
Bull Denim
12,5 oz. - 98% CO, 2% EA

ART. 0845
Gabardine
10,5 oz. - 98% CO, 2% EA

ART. 8165
Moleskin
11,5 oz. - 97% CO, 3% EA

FABRIC WITH
Old Dye

SPINTECH
Elastic



101 Blue Wash 710 Stone Wash

707R RELAX Regular fit with zip - length 33"
0900A Play Jeans 10 oz. - 85%CO, 12% PL, 3% EA
BEAUTIFUL LIKE JEANS, COMFORTABLE LIKE A SWEATPANTS



910 Black Wash 711 Stone Wash 510 Super Stone Wash

707 Regular fit with zip - length 34"
0970A Denim 12,5 oz. - 92% CO, 6% PL, 2% EA
SPINTECH *Stretch* "COTTON ON THE SKIN"



071 Stone Wash 051 Super Stone Wash

717 Slim fit with zip - length 32"
0921S Denim 13 oz. - 98% CO, 2% EA
SPINTECH *Stretch* "COTTON ON THE SKIN"



910 Black Wash







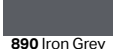

617R RELAX Slim fit chino - length 32"
0900A Play Jeans 10 oz. - 85%CO, 12% PL, 3% EA
BEAUTIFUL LIKE JEANS, COMFORTABLE LIKE A SWEATPANTS



710 Stone Wash




624R RELAX Regular fit chino - L. 34"
0900A Play Jeans 10 oz. - 85%CO, 12% PL, 3% EA
BEAUTIFUL LIKE JEANS, COMFORTABLE LIKE A SWEATPANTS



-  244 Brown
-  268 Sand Brown
-  687 Dress Blue
-  698 Bering Sea
-  775 Four-leaf Green
-  792 Green Scarab
-  890 Iron Grey
-  899 Black

707 5 POKETS Regular fit
9195A Heavy Moleskin Stretch - 12 oz.
 L 34" - 97% CO, 3% EA
 SPINTECH *Elastic* "COTTON ON THE SKIN"



-  268 Sand Brown
-  780 Rosin Green
-  874 Iron grey

639T CHINO Regular fit
9165A Light Moleskin Stretch - 11,5 oz.
 L 29" exp. - 97% CO, 3% EA
 SPINTECH *Elastic* "COTTON ON THE SKIN"



-  155 Beige Aluminium
-  268 Sand Brown
-  697 Blue Ashes
-  676 Dark Blue
-  775 Four-leaf Green
-  792 Green Scarab
-  896 Ebony grey
-  899 Black



707 5 POKETS Regular fit
1345A Heavy Gabardine - 10 oz.
 L 34" - 100% CO



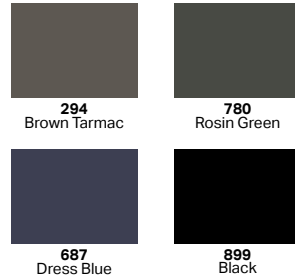
-  206 Brown Chipmunk
-  244 Brown
-  698 Storme Blue
-  687 Dress Blue
-  775 Four-leaf Green
-  855 Smoked Pearl
-  896 Grey Ebony
-  899 Black

617 CHINO Slim fit
9165A Light Moleskin Stretch - 11,5 oz.
 L 32" - 97% CO, 3% EA
 SPINTECH *Elastic* "COTTON ON THE SKIN"



-  268 Sand Brown
-  206 Brown Chipmunk
-  244 Brown
-  676 Dark Blue
-  792 Green Scarab
-  890 Iron Gray

624C CHINO Regular fit
9165A Light Moleskin Stretch - 11,5 oz.
 L 34" - 97% CO, 3% EA
 SPINTECH *Elastic* "COTTON ON THE SKIN"



815 Regular fit Long-sleeve crewneck T-shirt
0047A Jersey logo embroidery on the chest
 100% CO



815B Regular fit Long-sleeved crewneck T-shirt
0084A Slub fabric
 96% CO, 4% PL



814L Regular fit Long sleeve turtleneck t-shirt
0052X Jersey logo embroidery on the chest
 100% CO



822B Regular fit Long sleeve polo shirt
0065A Interlock - Contrasting details
 100% CO



172
Cinder



L98
Grey melange



687
Dress Blue



898
Black

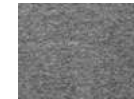


799
Climbing Ivy

833B Regular fit Sweatshirt with zip and hood
0043A Lightweight non-brushed sweatshirt
 60% Cotton, 40% Polyester



207
Roasted Pecan



L98
Grey melange



687
Dress Blue



898
Black

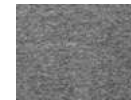


799
Climbing Ivy

834B Regular fit Sweatshirt with zip
0043A Lightweight non-brushed sweatshirt
 60% Cotton, 40% Polyester



687
Dress Blue



L98
Grey melange



799
Climbing Ivy



898
Black

730LB Regular fit Elastic waist -drawstring trousers
0043A Lightweight non-brushed sweatshirt
 60% Cotton, 40% Polyester



406PB Regular fit Ultralight Ripstop Vest
1412A Windproof with high collar
 Fabric: 100% PA



408YB Regular fit Ripstop Puffer jacket
1412A Jacket with hood
 Fabric: 100% PA



408CB Regular fit Ripstop Puffer jacket
1412A Jacket with hood
 Fabric: 100% PA





13 dicembre, 2023 5:20 PM
COSMO CATALOGO A124U



CARRERA s.p.a.

VIA SANTA IRENE, 1
37042 CALDIERO, VERONA - ITALY

TEL. +39 045 6139111
FAX +39 045 6150040

export@carrerajeans.it
carrera@carrerajeans.it

www.carrerajeans.com

